

INSTALLATION INSTRUCTIONS

AUTOMATIC UNIVERSAL ROLL TOWEL DISPENSER RETROFIT

The following are instructions for retrofitting Bobrick's Convertible Automatic, Universal Roll Paper Towel Dispenser Module 3974-50 into a ClassicSeries® Paper Towel Dispenser/Waste Receptacle (B-3944/B-3900) produced prior to July 2006 and similar models from other manufacturers.

RECOMMENDED TOOLS

CAUTION: Be sure to use proper safety gear.

- Drill
- Drill bits 5/64 (used to make pilot holes), 11/64 (used to drill out welds)
- 7/8 step bit (used to make a large opening when AC adapter is used)
- .06" diameter nail or smaller (used to push hinge pin out)
- Center Punch (used to keep drill bit from walking when drilling)
- Hacksaw or Dremel with cutting wheel (used to cut door check stud)
- Hammer and Chisel or Molding Claw Bar (to pry welds that are not fully drilled out)
- File (to smooth the surface after removal of components)

HARDWARE PROVIDED

- 7 each #6 x 1/2" sheet metal wide washer screws

The Cabinet is to be prepared for accepting the 3974-50 Roll Towel Dispenser by removing all components from the upper cabinet including welded parts to provide a clear area for installing the Dispenser into the cabinet. Instructions for the B-3944 are given in detail for reference.

RETROFIT PROCEDURES

1. Open towel cabinet door.

2. Remove nuts holding door check chain/cable. (If equipped).



Door Check Chain/Cable

3. Remove plastic or metal towel guide tray. (If equipped).



Towel Guide

4. Remove hinge pin and take off the door.

5. Cut off door check stud, located inside top right of cabinet. (If equipped).



Door Check Stud

Important Note: There are two options when performing the following retrofit procedures.

Option 1

a. Remove unit from the wall.

Pros	Cons
Easy to drill out welds	May not be practical if wall will be damaged due to removal
No center punch required	
No chance of drilling through a wall behind the cabinet	
Allows installer to use other installation methods for module	

Option 2

b. Leave unit in the wall.

Pros	Cons
Drilling standing up is more ergonomic	Requires drilling at angles
	Requires the usage of a center punch
	Chance of drilling through back wall when drilling out welds

6. Remove unit from wall. (If this is the option you selected)

7. Drill out welds.

Welds are quicker to drill out when the unit is removed versus installed in the wall.

- Drill out all the towel tray and guide welds.



Towel Tray and Guide

- Drill out all the hinge half welds.



Hinge Half

- Drill out all the door stop welds.



Door Stop

- Drill out all the spring guide brackets welds. (If model has any)



Spring Guide Brackets

- Drill out all lock angle welds. (If model has any)



Lock Angle

- Drill out all bracket welds. (If model has any)



Bracket

8. Pry out and remove the towel tray and guide, hinge half and door stop.



Hinge Half



Towel Tray and Guide



Lock Angle

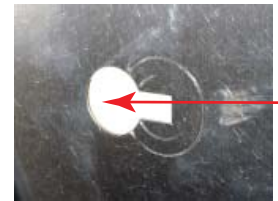
9. File rough, sharp or uneven surfaces where drilling and cutting was performed.
10. If using an AC Adapter (order part no. 3974-57) with module, use template to mark hole location on cabinet and drill a 7/8" hole for AC Adapter "lead wire" and file sharp edges afterwards.
 - AC Adapter hole may also be made anywhere in cabinet to make electrical connection more convenient.
11. Install cabinet back into the wall.

Important Note: There are two options when performing the following retrofit procedure.

12. Use template to mark module pilot holes and drill.

Option 1

- Use Module screw locations as a template and mark 7 screw locations on cabinet.
- Requires you to hold the module inside cabinet as holes are marked.
- Use center of rectangular section of keyhole slots in module to mark 7 screw locations if using module inside cabinet to mark module mounting pilot holes



Module Keyhole Slot

Option 2

- Use a paper or cardboard template mark 7 screw locations.
- Requires proper adhering of template to be sure module lines up correctly.

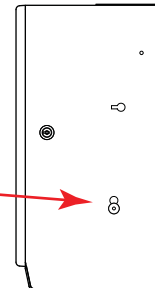
13. Install one washer screw in the top center of the module to hold in place.

14. Install the remainder washer screws.

- The two screws that are on the sides, towards the bottom of the module will be screwed in at an angle and will remain that way when tightened.



Side Towards Bottom
Screws at an Angle



Module

- On cabinets deeper than 4", using provided template, new holes can be made on the module closer to the front door to make it easier to install the module and will allow the lower screw heads to sit flush against the cabinet surface.

15. Completed Automatic Universal Roll Paper Towel retrofit unit.

