

Model ZW209FPH - Fire Protection Pressure Reducing Valve Control Valve Order Form



Customer: _____ Date: _____

Contact: _____ Email: _____

Telephone/Fax: _____ Ref. P. O. _____

Required Valve Information

Quantity: _____

All returns are subject to a restocking/refurbishing fee.
Contact Customer Care for details on return policies.

Size: (Check one) 1-1/4" 1-1/2" 2" 2-1/2" 3" 4" 6" 8" 10"

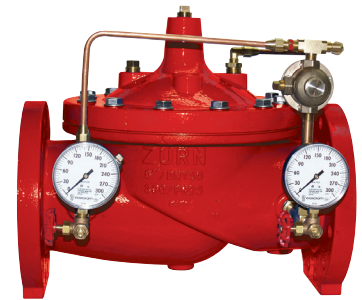
Function Options:

Optional "C" Option * - 40XL Hydraulic Check

Valve body is ductile iron, epoxy coated

Body Options:

Check one Standard - Full Port Globe Body
 "A" Option - Angle Style Body



DIRECTION OF FLOW ⇒

End Connections:

Check one "G" Option - IPS Grooved (1-1/2" - 10")
 "TH" Option - NPT Threaded (1-1/4" - 3")
 "Y" Option - ANSI Class 300 Flanges (1-1/2" - 10")
 "X" Option - ANSI Class 150 Flanges (1-1/2" - 10")

Main Valve Options:

Standard - Stainless Steel Seat, Seal Ring Retainer, and Stem Guide
Optional "Z" Option * - Visual Position Indicator

Pilot Options:

Standard - 3-Way Gauge Isolation Valves, Inlet and Outlet Pressure Gauges (UL), and "Wye" Type Strainer
 Standard - "HP Option" (30 -300 psi)

Check one Standard - Copper Tubing and Brass Fittings
 "ST" Option * - Stainless Steel Tubing (included with SP option, only replaces Copper Tubing)
 "SP" Option * - All Stainless Steel Pilotry (replaces all Brass Fittings, Pilot Valve & Copper Tubing)

Optional "RV" Option - Pilot on Reverse Side



DIRECTION OF FLOW ⇒

Note: Valves with set pressure above 175 psi cannot be UL Listed.

*Adder to standard price applies

1747 Commerce Way
Paso Robles, CA 93446
Phone: 855-663-9876
Fax: 805-237-7197

Customer Service Representatives available
Monday through Friday 5:30 a.m. to 5:00 p.m., PST
Fax completed forms to 805-237-7197, attention: Sales
Call 855-663-9876, wilkinscs@zurn.com
or visit us online at www.zurn.com

