

Application

The Zurn Wilkins Model ZW205E Pilot Operated Pressure Relief Valve is designed for many applications where it is critical to maintain upstream pressure. A solenoid control and accelerator pilot are provided to intercept the operation of the pressure relief control and close the main valve. In addition the Model ZW205E comes standard with epoxy coating internally and externally for corrosion protection, as well as isolation valves and pressures gauges for quick and easy maintenance or repair.

Standards Compliance:

- ANSI/AWWA C530
 - Meets the requirements of NSF/ANSI 61*
- *(0.25% MAX. WEIGHTED AVERAGE LEAD CONTENT)

Materials

Main Valve Body	Ductile Iron ASTM A536
Main Valve Bonnet	Ductile Iron ASTM A536
Disc Guide	Stainless Steel
Seat	Stainless Steel
Disc	Buna-N Rubber
Diaphragm	Nylon Reinforced Buna-N
Stem	Stainless Steel
Spring	Stainless Steel

Standard Features

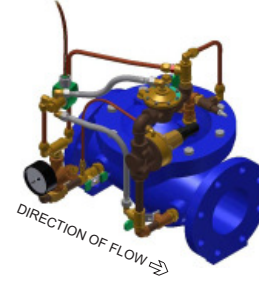
- Epoxy Coated, FDA Approved
- Pilot Assembly
 - SXL "Wye" Type Strainer
 - 2-Way Accelerator Pilot
 - Closing Speed Control (sizes 1 1/4" - 4")
 - Isolation Ball Valves
- Inlet Pressure Gauge
- ANSI Class 150 Flanges
- Copper Tubing and Brass Fittings

BODY CONFIGURATIONS		GLOBE STYLE BODY		ANGLE STYLE BODY
END CONNECTION	PRESSURE RATING	FULL PORT	REDUCED PORT	
Threaded	400 psi max.	1 1/4"-3"	n/a	1 1/4"-3"
Flanged	ANSI Class 150, 250 psi max.	1 1/2"-16"	3"-10"	1 1/2"-10"
	ANSI Class 300, 400 psi max.			
Grooved	300 psi max.	1 1/2"-10"	n/a	1 1/2"-10"
MINIMUM INLET PRESSURE 10 PSI				

TEMPERATURE RATING: Water 33°F to 140°F
 PILOT SPRING RANGE: 15-150 psi
 MAX. OPERATING PRESSURE DIFFERENTIAL: 200 psi

Schematic Diagram

Item	Description of Standard Features
1	Main Valve
2	850XL Isolation Valve
3	SXL "Wye" Type Strainer
4	Pressure Gauge
5	Restriction Fitting
6	RLF Pressure Relief Control
7	2-Way Accelerator Pilot
8	PV-SOL3 3-Way Solenoid Control



Options (Add suffix letters to ZW205E)

Function

- C 40XL2 Hydraulic Check with Isolation Valve
- L SC1 Closing Speed Control (Standard 1 1/4" - 4")
- O SC1 Opening Speed Control

Body

- A Angle Style Body
- R Reduced Port Body

Connections

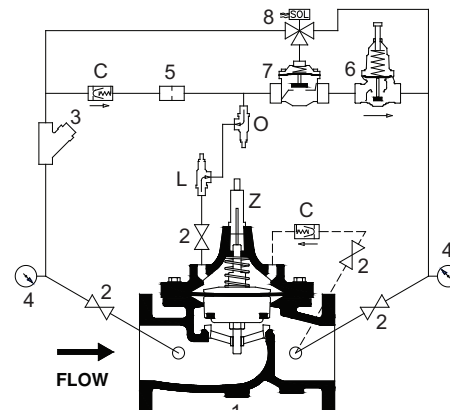
- G IPS Grooved
- TH NPT Threaded
- Y ANSI Class 300 Flanges

Main Valves Options

- Z ZPI Visual Position Indicator

Pilot System

- LP3 5-15 psi Low Pressure Range PV-RLF Pilot
- LP2 10-35 psi Low Pressure Range PV-RLF Pilot
- LP 30-90 psi Low Pressure Range PV-RLF Pilot
- HP 150-300 psi High Pressure Range PV-RLF Pilot
- ST Stainless Steel Tubing ("included with SP option, only replaces Copper Tubing")
- SP All Stainless Steel Pilotry (replaces all brass fittings, pilot valve and copper tubing. "GL" Option included)
- SH Stainless Steel Braided Hoses (only replaces Copper Tubing)
- NC Normally Closed (energize to open) Main Valve, 120vac Solenoid
- NO Normally Open (energize to close) Main Valve 120vac Solenoid
- 24NC Normally Closed (energize to open) Main Valve, 24vac Solenoid
- 24NO Normally Open (energize to close) Main Valve 24vac Solenoid
- NS Non-Standard Solenoid specify Voltage/Frequency/AC/DC/Operation
- MO Manual Operator on Solenoid Valve (to control during power failure)
- RV Pilot Installed on Reverse Side
- GL Liquid Filled Pressure Gauge

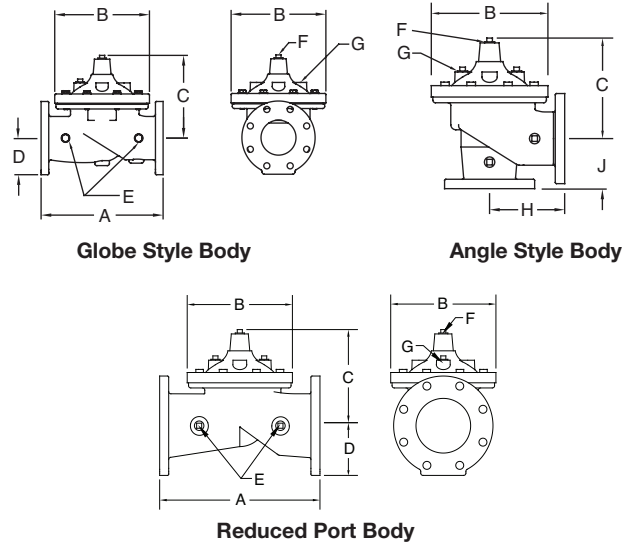


Globe and Angle Main Valve Dimensions

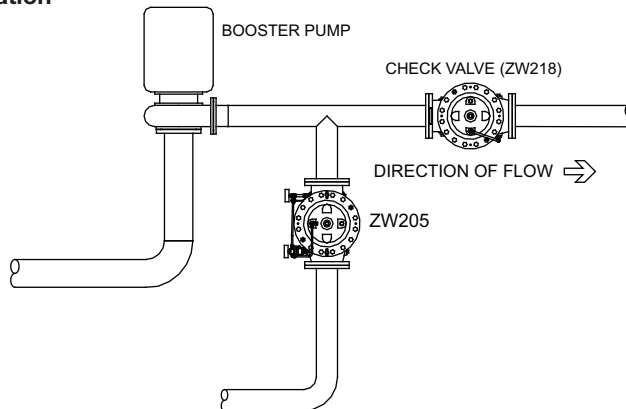
DIM	FULL PORT	VALVE SIZE INCHES (mm)											
		1 1/4 (32)	1 1/2(38)	2 (50)	2 1/2 (65)	3 (80)	4 (100)	6 (150)	8 (200)	10 (250)	12 (300)	14 (350)	16 (400)
A	Threaded	7 1/4	7 1/4	9 7/16	11	12 1/2							
	Class 150 Flange		8 1/2	9 3/8	11	12	15	20	25 3/8	29 3/4	34	39	41 3/8
	Class 300 Flange		9	10	11 5/8	13 1/4	15 5/8	21	26 7/16	31 1/8	35 1/2	40 1/2	43 1/2
	Grooved		8 1/2	9	11	12 1/2	15	20	25 3/8	29 3/4			
B	Diameter	5 5/8	5 5/8	6 3/4	8	9 3/16	11 11/16	15 3/4	20 1/8	23 11/16	27 1/2	31 3/4	34 1/2
C	Max.	5 3/4	5 3/4	6 3/16	7 3/8	8	10 3/16	12 5/16	15 9/16	17 5/8	20 3/16	22 13/16	25 7/8
D	Threaded/Grooved	1 3/8	1 3/8	1 3/4	2 1/8	2 9/16	3 7/16	5	5	5 13/16	6 3/4	8 7/8	8 13/16
	Class 150 Flange		2 1/2	3	3 1/2	3 3/4	4 1/2	5 1/2	6 3/4	8	9 1/2	10 1/2	11 3/4
	Class 300 Flange		3	3 1/4	3 3/4	4 1/8	5	6 1/4	7 1/2	8 3/4	10 1/4	11 1/2	12 3/4
E	NPT Body Tap	3/8	3/8	3/8	1/2	1/2	3/4	3/4	1	1	1	1	1
F	NPT Cvr. Plug Tap	1/2	1/2	1/2	1/2	1/2	3/4	3/4	1	1	1	1	1
G	NPT Cover Tap	3/8	3/8	3/8	1/2	1/2	3/4	3/4	1	1	1	1	1
H	Threaded	3 1/4	3 1/4	4 3/4	5 1/2	6 1/4							
	Class 150 Flange		4	4 3/4	5 1/2	6	7 1/2	10	12 11/16	14 7/8			
	Class 300 Flange		4 1/4	5	6	6 7/16	8	10 1/2	13 1/4	15 9/16			
	Grooved		4 7/16	4 3/4	5 1/2	6	7 1/2	10	12 11/16	14 7/8			
J	Threaded	1 15/16	1 15/16	3 1/4	4	4 1/2							
	Class 150 Flange		4	3 1/4	4	4	5	6	8	8 5/8			
	Class 300 Flange		4 1/4	3 1/2	4 5/16	4 7/16	5 5/16	6 1/2	8 1/2	9 5/16			
	Grooved		3 3/16	3 1/4	4	4 1/4	5	6	8	8 5/8			
Valve Stem Internal Thread		10-32	10-32	10-32	10-32	1/4-20	1/4-20	1/4-20	3/8-16	3/8-16	3/8-16	3/8-16	3/8-16
Stem Travel (in)		7/16	7/16	3/4	7/8	1	1 3/16	1 3/4	2 3/8	2 13/16	3 7/16	3 13/16	4 5/16
Approx. Wt. (lbs)		22	26	36	55	70	130	240	440	720	820	1200	1550

Reduced Port Main Valve Dimensions

DIM		VALVE SIZE INCHES (mm)				
		3" (80)	4" (100)	6" (150)	8" (200)	10" (250)
A	Class 150 Flange	10 1/4	14	17 3/4	21 7/16	26
	Class 300 Flange	11	14 1/2	18 11/16	22 7/16	27 7/16
B	Dia	6 3/4	9 3/16	11 11/16	15 3/4	20 1/8
C	Max	6 3/8	8 7/16	12 5/16	13 1/4	16 3/4
D	Class 150 Flange	3 3/4	4 1/2	5 1/2	6 3/4	8
	Class 300 Flange	4 1/8	5	6 1/4	7 1/2	8 3/4
E	NPT Body Tap	3/8	1/2	3/4	3/4	1
F	NPT Cvr. Plug Tap	3/8	1/2	3/4	3/4	1
G	NPT Cvr. Tap	3/8	1/2	3/4	3/4	1
Valve Stem Internal Thread		10-32	1/4-20	1/4-20	3/8-16	3/8-16
Stem Travel (in)		3/4	1	1 1/5	1 3/4	2 3/8
Approx. Wt. (Lbs)		35	80	140	275	480



Typical Installation



JOB NAME _____

CONTRACTOR _____

JOB LOCATION _____

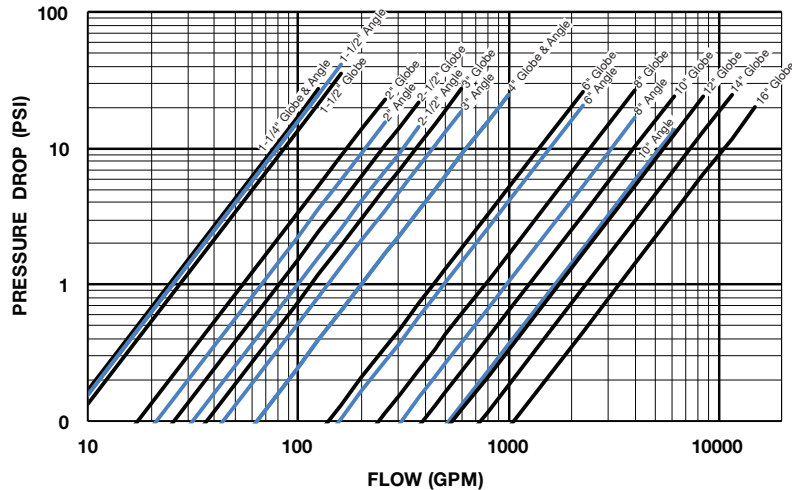
ENGINEER _____

Flow Characteristics

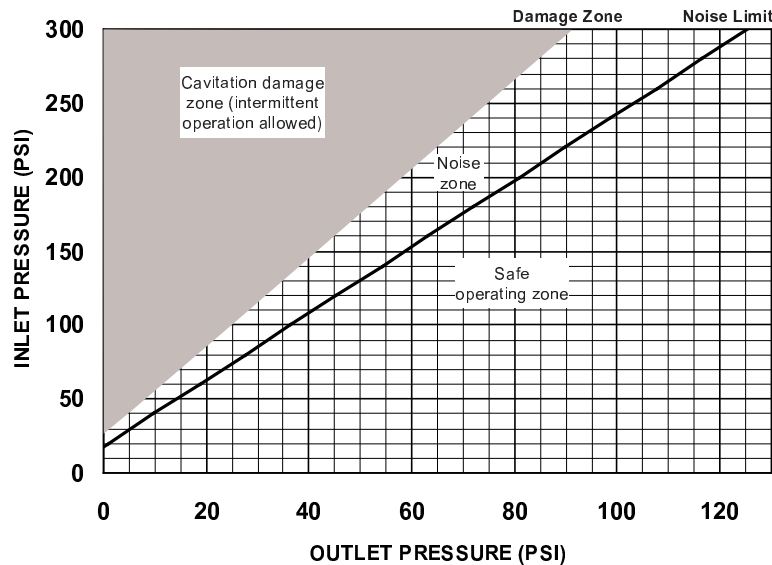
Full Port Globe and Angle Valve size	inches (mm)	1 1/4 (32)	1 1/2 (40)	2 (50)	2 1/2 (65)	3 (80)	4 (100)	6 (150)	8 (200)	10 (250)	12 (300)	14 (350)	16 (400)
Reduced Port Globe Valve Size	inches (mm)			3 (80)		4 (100)	6 (150)	8 (200)	10 (250)				
Suggested Flow (GPM)	Max. Continuous	93	125	210	300	460	800	1800	3100	4900	7000	8400	11000
	Max Intermittent	120	160	260	375	600	1000	2250	4000	6150	8700	10500	13800
	Min. Continuous	10	10	15	20	30	50	115	200	300	435	530	690
Suggested Flow (Liters/sec)	Max. Continuous	6	8	13	19	29	50	113	195	309	550	665	870
	Max. Intermittent	7.6	10	16.4	23	37	62	142	246	388	440	530	95
	Min. Continuous	.6	.6	0.9	1.3	1.9	3.2	7.2	13	19	28	33	43

Suggested flow calculations are based on flow through Schedule 40 Pipe. Maximum continuous flow is approx. 20 ft./sec (6.1 meters/sec) & maximum intermittent is approx. 25 ft./sec (7.6 meters/sec) and minimum continuous flow is approx. 1.25 ft./sec (0.4 meters/sec).

BODY MINIMUM FRICTION LOSS



PRESSURE REDUCTION LIMIT



Note: If the valve is to be used for continuous flow, supply adequate back pressure to operate the valve below the "Damage Zone" shown on the "Pressure Reduction Limit" chart. If the valve discharges to atmosphere adequate back pressure is very important, contact Zurn Wilkins for assistance.

Specifications

The Pressure Relief Valve shall be a diaphragm actuated, pilot controlled valve. The main valve body shall be ductile iron ASTM A 536. The stem of the basic valve shall be guided top and bottom. The diaphragm shall not be used as a seating surface. All internal and external ferrous surfaces shall be coated with a high quality, fusion epoxy coating. The pilot control shall be field adjustable from 50 psi to 200 psi. Pilot control shall include a solenoid to override and close main valve. The valve shall be certified to NSF/ANSI Standard 61 The Pressure Relief Valve shall be a ZURN WILKINS Model ZW205E.