



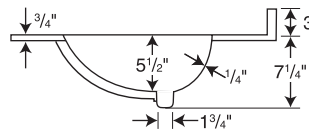
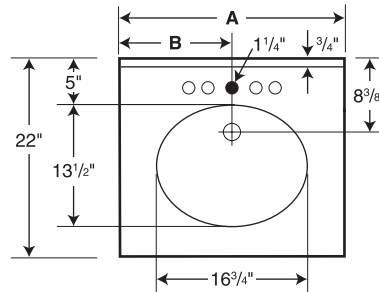
WARRANTY
 Limited Lifetime – Residential
 Limited 25-year – Commercial

Manufactured from Swanstone solid surface
 (See page 2 for detailed information.)

Recommended for high-use traffic areas and commercial surfaces.

FEATURES

- Reinforced solid surface means color and texture run all the way through and cannot wear away.
- Coordinates with other Swanstone products.
- Easily accommodates all faucet styles.
- Chemical resistant—acetone will not harm.
- Heat resistant—hot curling irons will not damage it.
- Make-up and hair-dye can be buffed with household cleansers.
- Heat, stain and scratch resistant for lasting beauty.



Model	A	B
VT1B2225	25"	12-1/2"
VT1B2231	31"	15-1/2"
VT1B2237	37"	18-1/2"
VT1B2243	43"	21-1/2"
VT1B2249	49"	24-1/2"
VT1B2255	55"	27-1/2"
VT1B2261	61"	30-1/2"

○ Drill Points ● Pre-drilled

Capacity:
 1-3/4 gallons
 to overflow

SPECIFICATIONS

Ellipse 22" Single Bowl Vanity Tops

Model	Part	Nominal Dimensions	Ship Wt. Lb.	Ship FedEx	Carton Dims. In.	Cu. Ft.
VT1B2225	VT02225	22" D x 25" W	21	FedEx	29 x 25 x 13	5.45
VT1B2231	VT02231	22" D x 31" W	26	FedEx	35 x 25 x 13	6.58
VT1B2237	VT02237	22" D x 37" W	30	FedEx	41 x 25 x 13	7.71
VT1B2243	VT02243	22" D x 43" W	31	FedEx	46 x 25 x 13	8.65
VT1B2249	VT02249	22" D x 49" W	36	FedEx	53 x 25 x 12	9.21
VT1B2255	VC02255	22" D x 55" W	55	-	58 x 25 x 13	10.91
VT1B2261	VC02261	22" D x 61" W	59	-	63 x 27 x 13	12.80

Includes: One compression-molded vanity top with overflow, integral bowl, back splash and installation instructions.

Packaging: Each Swanstone unit is packed in a rectangular carton.

ACCESSORIES

- Optional VT21-3SS Side Splash available (See page 115)
- Optional Front and Side Apron available (See page 115)

STANDARDS AND RATINGS

American National Standard Institute—ANSI Z124.3

International Association of Plumbing and Mechanical Officials (IAPMO)—Listed

cUPC listed—Certified to CSA Test Standard B45.5 by IAPMO

Uniform Plumbing Code (UPC)

For a complete list of tests and results see the Technical Data Sheet – page 175.

SUPPORT DOCUMENTS

Installation instructions available at swanstone.com.

MADE IN USA

COLORS

(See inside back cover for color sample.)

Solid Colors:

- White (010)
- Bone (037)
- Bisque (018)
- Bright White (137)
- Pearl (138)

Aggregate Colors:

- Acorn (123)
- Almond Galaxy (046)
- Arctic Granite (035)
- Baby's Breath (168)
- Barley (091)
- Bermuda Sand (040)
- Canyon (124)
- Caraway Seed (169)
- Cloud Bone (126)
- Cloud White (125)
- Cornflower (063)
- Glacier (121)

- Golden Steppe (128)
- Gray Granite (042)
- Ice (130)
- Indian Grass (071)
- Mountain Haze (129)
- Night Sky (012)
- Pebble (072)
- Prairie (122)
- Sierra (094)
- Tahiti Desert (050)
- Tahiti Gray (053)
- Tahiti Ivory (059)
- Tahiti Matrix (058)
- Tahiti Sand (051)
- Tahiti Terra (055)
- Tahiti White (011)
- Tundra (131)
- Winter Wheat (060)

MAINTENANCE AND CLEANING INFORMATION

Cleaning regularly with common household liquid cleaners is recommended. If necessary abrasive liquids or detergents are safe and effective for use with nylon scouring pads, sponges, Mr. Clean® Magic Eraser® or other similar products. Mineral-stain removers are acceptable as well. **Do not** use metal scouring pads.