

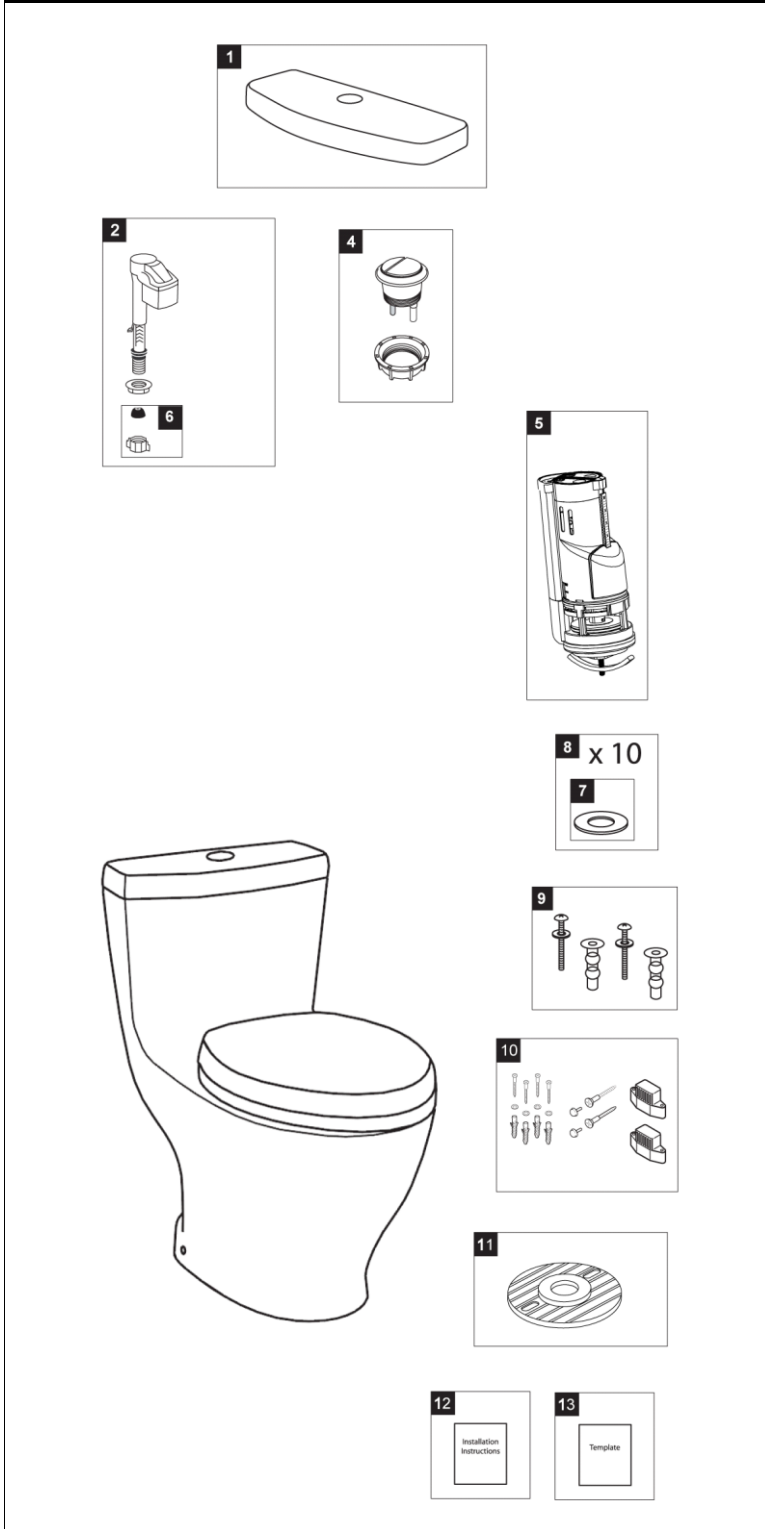
MS654204MF & MS654114MF

MS654204MF
CST654MF

MS654114MF
CST654MF

Aquia®

1.6 & 0.9 Gpf Toilet, Elongated, Dual-Max®, 12" Rough-In, Universal Height



Items	Parts	Description
1	TCU654CR#01 TCU654CR#03 TCU654CR#11 TCU654CR#12 TCU654CR#51	Tank Lid - Cotton Tank Lid - Bone Tank Lid - Colonial White Tank Lid - Sedona Beige Tank Lid - Ebony
2	TSU99A.X	Fill Valve
4	THU340#CP	Push Button with nut - Chrome Plated
5	THU338	Flush Valve
6	THU213	Parts Bag Assembly
7	9BU088E	Flush Valve Gasket (1 piece)
8	THU348	Flush Valve Gaskets (10 pieces)
9	THU651N	Top Mounting Hardware - Chrome Plated
10	THU223#CP	Toilet Mounting Hardware - Chrome Plated
11	THU291	Socket Rough-In
12	0GU069	Installation Instruction & Owner's Manual
13	0GU170	Template - Installation

Note:

Product Number Explanations

One-Piece Toilet

(MS) Toilet & Seat Combination
(CST) Gravity Type Toilet
(654) Toilet Model
(204) Seat Model
(114) Seat Model
(M) Dual-Max®
(F) Universal Height

Actual Product may vary slightly from illustration.